

# WIND RATED SECTIONAL DOORS



Superior strength and rigidity are qualities of the unique design of the Steel-Line wind rated sectional door, suitable for high wind or cyclonic locations.

## **Stringently tested to meet wind load requirements**

Steel-Line **wind rated garage doors** have been engineered to the highest standard and tested at the James Cook University Cyclone Testing Station against the wind loading requirements of AS/NZS 4505-2012.

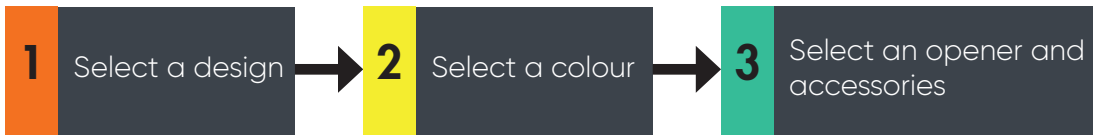
## **Designed for strength and safety**

Our **Strut-Lock™** Post Free wind rated sectional doors incorporate the use of heavy duty struts, commercial style side hinges, top brackets in combination with a unique stile reinforcement that provides maximum resistance to forces exerted by cyclonic and high winds.

The **Wind Brace** design featured with removable steel wind brace post(s) that is installed to the garage door once a cyclone warning is received. It takes about 2-5 minutes to install, and no tools are required. This feature can significantly enhance wind resistance up to C4 wind rating while still ensuring a smooth door operation.



# 3 easy steps to create your sectional garage door



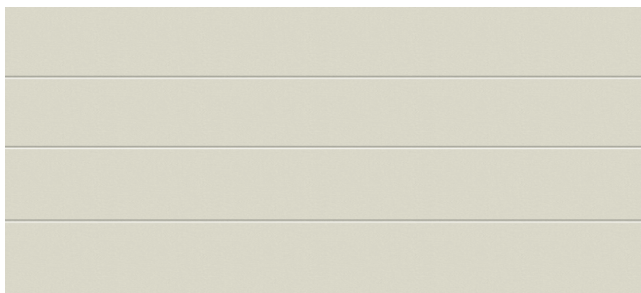
## 1 Door Profiles and Finishes



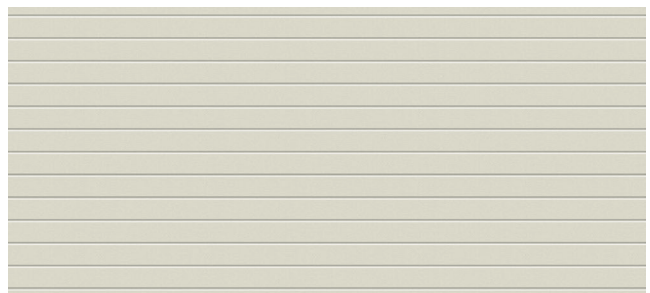
Ranch (textured finish)



Heritage (textured finish)



Flatline (smooth or textured finish)



Slimline (smooth or textured finish)



Glacier (smooth or textured finish)

NOTE:

- Smooth finish Slimline, Glacier and Flatline are only available in the Savannah range at premium pricing.
- For "smooth finish" garage doors, shadowing in the panel surface will be more evident. Shadowing is the rippling that occurs as a result of roll forming / pressing flat sheet steel.



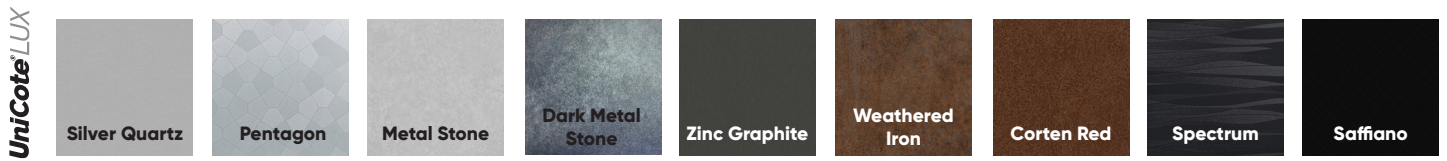
Textured Finish | Slimline



Smooth Finish | Glacier



Architectural



Timbers of the World



**Dulux** More than 70 Dulux colours also available for sectional doors only. Please inquire about availability.

Colorbond Classic



Matt Range



Timbergrain Colours



- NOTE:
- The colours and patterns shown are provided as a guide only. Whilst we endeavour to get as close as possible, the limitations of printing processes make extremely accurate matches impossible. We strongly recommend comparing your choice with actual samples and discussing with your product consultant. Additionally, Dynamic Door Service reserves the right to vary or delete colours without notice.
  - UniCote range is only available in the Flatline, Slimline and Glacier sectional door profiles.

### 3

## A small additional investment for greater convenience

Fit your Strut-Lock™ wind rated sectional door with a specially designed automatic opener for safe and hassle free entry and exit from your garage or shed.

All of our openers are engineered to the highest standards ensuring easy operation, optimum performance, long life and peace of mind.

- Soft start / stop function to ensure smooth and quiet door operation
- Courtesy lighting illuminates your garage when the opener is activated.
- Manual Release: in case of power failure you can simply activate the manual release to open your garage door.
- Safety Auto Reverse System: door immediately stops and reverses when it comes into contact with an object.
- Remote handsets and wireless wall button
- 5 year motor warranty / 2 year electronics warranty



**2 x Three Channel Key Ring 1 x Wall Mounted Transmitter**



**SD1200 Motor**



**Optional Wireless Keypad**

can be programmed with up to twelve user codes, so you can leave your keys at home.



**Optional Battery Backup**

provides an energy supply in the event of a power cut.

# DEFY THE ODDS

## Quality Features



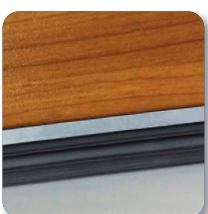
### Strong Hinges

Steel-Line uses hinges made of robust plastic for superior strength, quieter and trouble free operation.



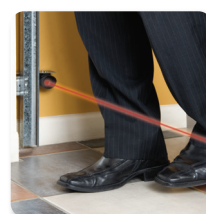
### Finger Proof Safety

Our sectional doors feature a curved finger proof joint for added safety.



### Heavy Duty Bottom Rail

To increase strength in the lower part of the garage door and add extra protection.



### Optional 'Photo Eye'

Allows the garage door to automatically reverse when its sensory light beam is broken by an obstruction.

## Heavy duty and reinforced hardware throughout product

Back of the Strut-Lock™ Sectional Door



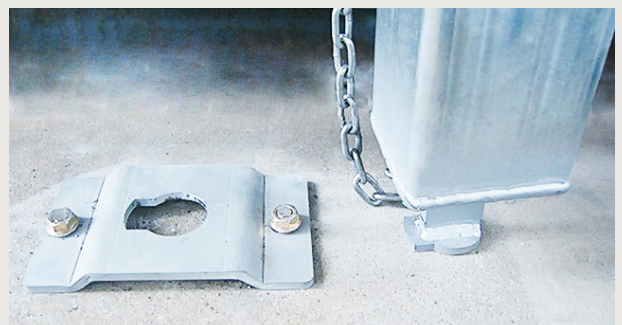
Wind Brace Design



Typical Post to Strut Connection Details - Wind Brace



Locking Base Plate Fix to Floor - Wind Brace



## Is your garage door prepared for a cyclone?

As the homeowner, it is important to check with your local council for your home's specific wind load requirements and appropriate design pressure.

Australia is a great place to live. However, every year from November to April, cyclones can affect the eastern, northern and western coastlines, so whether you live in the city or the rural area, learning to protect yourself, your family and your property from cyclones is very important.

As the largest point of entry, your garage door offers the greatest threat for high-pressure destruction. A number of studies have discovered one of the common failures during cyclone event was garage doors being blown in or out. This allowed wind and water to enter the house, which caused the roof and walls to fail. On some buildings, the change in internal pressure caused other damage to the structure.

If you live in high wind and cyclonic areas, it's necessary to engineer your garage door a little differently to ensure it withstands the particular stresses it may be subject to and minimise the potential damage to your home.

New homes in cyclone-prone areas of northern Australia are now required to use wind-resistant garage doors, installed professionally to meet the current National Construction Code.

## Various design options to meet size and wind load requirements

GARAGE DOOR	WIND CLASSIFICATION	WIND SPEED (KM/HR)	MAX DOOR HEIGHT (MM)	MAX DOOR WIDTH (MM)
Post Free Sectional Door	C2	220	2580	5500
Wind Brace Sectional Door	C2	220	3405	to 6000
	C3	266	2850	
	C4	310		

## Wind Classification

AS4055-2012 is based on a ten-band wind classification system: N1 to N6 for non-cyclonic Region A & Region B; and C1 to C4 for cyclonic Region C & Region D. A higher classification number means the wind speed is higher.

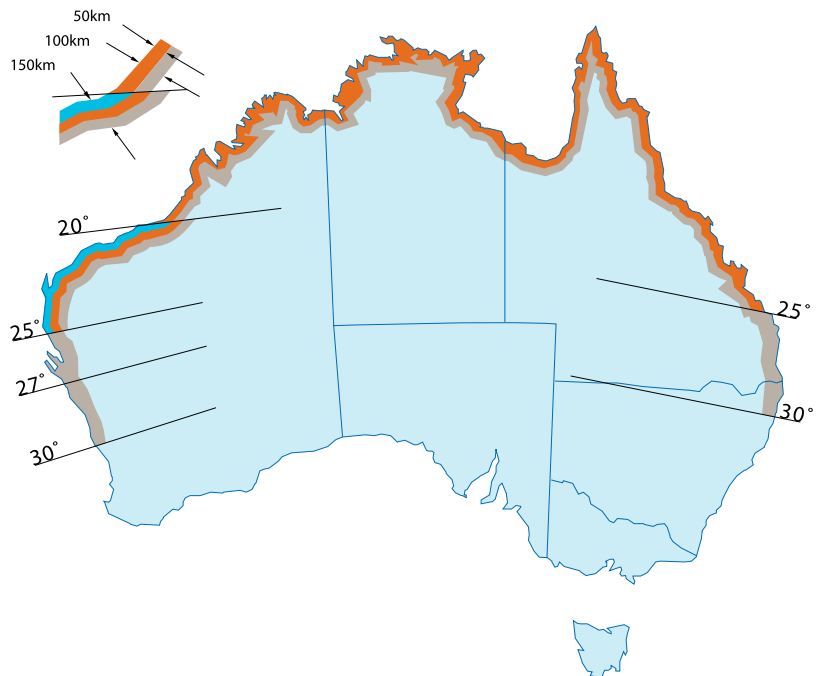
## Location Classification

Cyclonic Classification:

■ Region C    ■ Region D

Non-cyclonic Classification:

■ Region A    ■ Region B



Refer to the AS4055-2012, FIGURE 2.1 BOUNDARIES OF REGIONS A, B, C AND D for more information.

**DYNAMIC™**  
DOOR SERVICE

[dynamicds.com.au](http://dynamicds.com.au) | 1300 645 056