



DYNAMIC™
DOOR SERVICE

NYLON BRUSH SEALS

Description

Aluminium extrusion with a nylon brush seal. The nylon brush seal is rated as UL94-V2 and is suitable for use as ember protection and sealing garage doors as per AS3959.

Key Benefits

Easy to install onto new or existing doors.

Lengths

Comes in lengths of 2.5 m but can be cut and joined to suit any sized door.

Fixing Method

Self-drilling screws

Finishes

Anodised aluminium with black brush filaments.

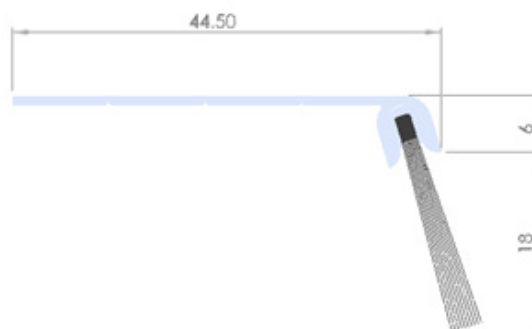
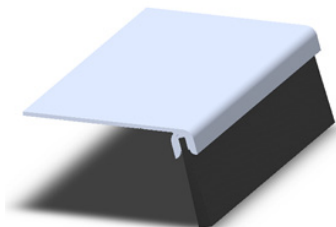


dynamicds.com.au | 1300 645 056

DEFY
THE ODDS

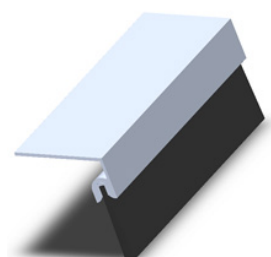
10-450-5010

- 18mm Brush
- F Type Aluminium Extrusion
- Attach to jamb and head of sectional doors so that the brush is in contact with the side of the door



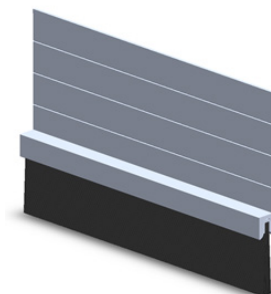
20-450-5010

- 30mm Brush
- Y Type Aluminium Extrusion
- Attach to Jamb of opening for roller doors



20-450-5015

- 46mm Brush
- H Type Aluminium Extrusion
- Attach to head of opening for roller doors



20-450-5020

- 60mm Brush
- Y Type Aluminium Extrusion
- Attach to head of opening for roller doors

